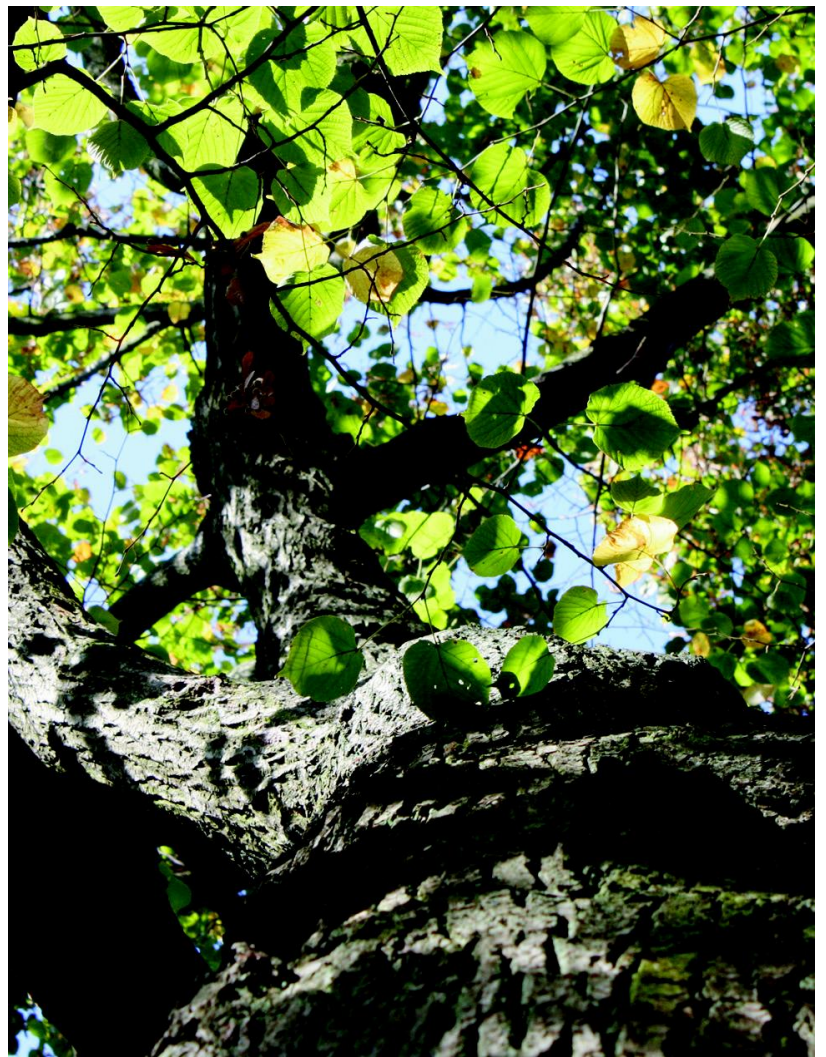


IML-RESI MD300

Lightweight hand drill, fast and easy to use



IML-RESI MD300

Lightweight hand drill, fast and easy to use

IML-RESI MD300

The IML-RESI MD300 is a purely mechanical drill that does not record an electronic or mechanical measurement curve. The user 'feels' the result and can read the penetration depth on the 300 mm scale. Often an abrupt and fast penetration is perceptible when the instrument detects a rot zone. Even conifer year rings can be felt.

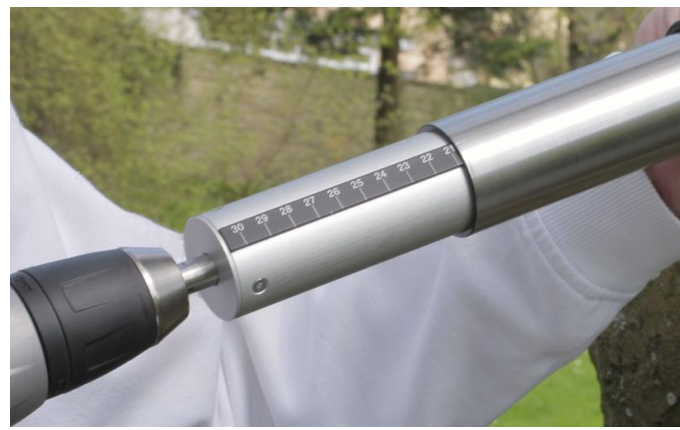
- Cordless drill as drive unit
- Sturdy stainless steel housing
- Easy to read 1:1 depth scale
- Diameter of the drilling needle:
 - Needle tip: \varnothing 3,0 mm
 - Needle shaft: \varnothing 1,5 mm
- Available drilling depth 300 mm
- Drill spindle for external drill: \varnothing 12 mm

Scope of delivery (standard):

- MD300 drill attachment (depth 300 mm)
- 1x drilling needle (Length 387 mm)
- Chuck key
- Instructions manual



IML-RESI MD300



Drilling depth scale 1:1

IML-RESI MD300
without drill (only MD300)

Item No. 4000150

IML-RESI MD300
with Bosh drill GSR 18V Li-Ion Professional
- incl. 1 quick battery charger + 2x Premium Li-Ion batteries 18V 2,6 Ah

Item No. 4000152

Optional Accessories

IML-RESI MD300

Drilling needles IML-RESI MD300 (10 pieces per pack)
Length 387 mm

Item No. 3100317

Quiver for MD300 drilling needles
For safe storage of approximately 50 drilling needles

Item No. 3103016

Aluminium transport case
incl. foam inlay and key

Item No. 3100311

IML PowerDrill®

Uncompromisingly precision for all applications



IML PowerDrill®

Uncompromisingly precision for all applications

IML-RESI PD-Series

The IML Power Drill® can be used anywhere where reliable and meaningful test results are required.

- Comfortable with clear display
- Easy, fast and digital recording of the measurement data
- Fatigue-free operation due to the ergonomic design and low overall weight
- High drilling performance with minimal energy consumption
- Rugged and splashproof aluminium housing
- Simultaneous recording of drilling resistance and feed cam for better decay detection
- Automatic curve evaluation for wooden poles and wooden play equipment

Scope of delivery (standard):

- Measuring instrument PD with a mounted drilling needle, 25 m standard memory, quiver with 5 drilling needles, fast battery charger, 2x premium 18V 2.6 Ah Li-Ion batteries, mini-USB 2.0 data transfer cable, drill chuck with tools, pliers, system transportcase, IML Software Center PD tools, Instructions Manual



IML-RESI PD400



Integrated 45° adapter

IML-RESI PD200
Drilling depth 200 mm

Item No. 3100900-2PD

IML-RESI PD300
Drilling depth 300 mm

Item No. 3100900-3PD

IML-RESI PD400
Drilling depth 400 mm

Item No. 3100900-4PD

IML-RESI PD500
Drilling depth 500 mm

Item No. 3100900-5PD

IML-RESI PD600
Drilling depth 600 mm

Item No. 3100900-6PD

IML-RESI PD750
Drilling depth 750 mm

Item No. 3100900-7PD

IML-RESI PD1000
Drilling depth 1000 mm

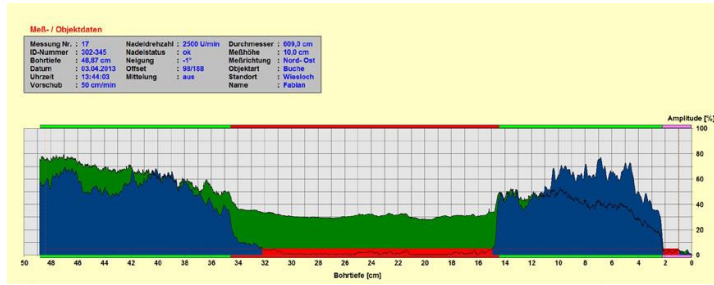
Item No. 3100900-8PD

Optional add-ons

IML-RESI PD-Series

IML Software Center PD-Tools PRO

Extended Evaluation Software



Functions:

- Standard software functions: Configuration, transfer, analysis, magnification, print-out and saving
- PRO version additional features: Export, averaging, printing, cavity detector, tree-ring analysis and simultaneous display and transmission of the measured curve during drilling on PC or handheld

IML Software Center PD-Tools PRO

incl. 3 installation licences

Item No. 3100808

Multi User Licence

Activation of software for another PC or handheld (for more than three installations)

Item No. 3100890

Memory Enlargement

Please note: If the FEED add-on module is installed, then specified memory lengths are halved.

Memory Enlargement MEM1

50 metres recording length of the measurement curves

Item No. 4100008

Memory Enlargement MEM2

100 metres recording length of the measurement curves

Item No. 4100009

Memory Enlargement MEM3

180 metres recording length of the measurement curves

Item No. 4100010

Add-on Module WoodInspector



The IML WoodInspector is an additional module for the PD-Tools PRO software package. An automatic assessment of wooden poles or wooden play ground equipment is performed by the IML WoodInspector. Its features are: graphic and numerical cavity detection, detection of decay and incipient decay, evaluation of the data feed, automatic diameter detection for automatic withdrawal of the drilling needle after exiting below a particular drilling angle, displaying the drilling result immediately after drilling, Individual user adjustment.

IML WoodInspector

Item No. 3100814

IML WoodInspector Complete package

incl. IML WoodInspector, FEED, TLT and SCL

Item No. 3100815

Add-on Module Needle Check NC



Automatic check of needle tip for breakage and wear after every measurement. Different wear tolerances can be selected when ordering. The status of the needle (,ok' / ,worn') is stored with each measurement.

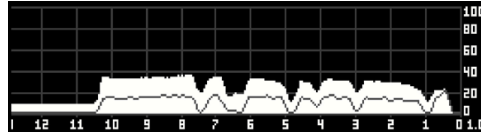
Add-on Module Needle Check NC

Item No. 4100015

Optional add-ons

IML-RESI PD-Series

Add-on Module FEED



Additional recording of the feed curve (compressive force) next to the drilling curve (torsional force). In some cases the feed curve contains a significantly reduced curve or no skirt friction at all acting on the drilling needle. This means that it is considerably easier to detect the difference between healthy and damaged wood. In addition, it is easier to diagnose rot on the feed curve at an early stage.

Add-on Module FEED

Item No. 4100017

Add-on Module Tilt Sensor TLT

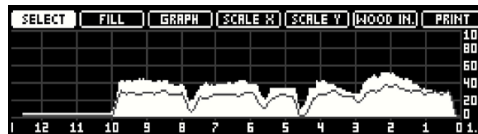


Tilt angle display and storage. Further options include setting two preferred angles with optical and acoustic indicators and disable function if the tilt is outside the set tolerance. Optional tilt compensation in the drilling depth preselection..

Add-on Module Tilt Sensor TLT

Item No. 4100018

Add-on Module Scaling Package SCL



Scaling of the drilling depth on a scale of 1:1, magnification, and overall view (full drilling depth on display width).
Scaling of the amplitude to a fixed factor of 1.0 / 1.5 / 2.0 / 2.5 / 3.0 or automatic scaling

Add-on Module Scaling Package SCL

Item No. 4100019

Add-on Module Access Control ACS



Records of almost all functions and settings with a password prompt. Avoids an unintentional change of device settings.

Add-on Module ACS

Item No. 4100020

Add-on Module RCI

Interface for configuration, control and data transfer to customer software (not using PD-Tools/PD-Tools Pro). The data may be processed further directly by the customer software.

Add-on Module RCI

Item No. 3100807

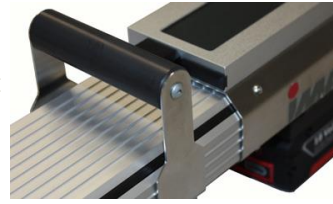
Optional Accessories

IML-RESI PD-Series

Handle

Additional handle which can be attached to the device in different positions

Handle



Item No. 4100024

Shoulder Strap

Shoulder strap with 2 snap hooks and 2 sturdy eyelets on the instrument

Shoulder Strap



Item No. 30009903

Transport bag

Transport bag for IML-RESI PD instrument with practical side pockets for batteries, pliers and quiver

Transport bag for IML-RESI PD300 / PD400

Transport bag for IML-RESI PD500



Item No. 4100047

Item No. 4100053

Bluetooth Printer

On-site print-out of measurements on a 1:1 scale

Bluetooth Printer
incl. 10 Thermal-Paper rolls



Item No. 4100014

Premium Batteries

Spare batteries

Premium Battery 18V Li-Ion 2,6 Ah

Premium Battery 18V Li-Ion 3,0 Ah



Item No. 30009928

Item No. 30009933

Cleaning Tool

Tool for cleaning the front adapter

Cleaning Tool



Item No. 4100051

Optional Accessories

IML-RESI PD-Series

Quiver for Drilling Needles

For safe storage of approximately 50 drilling needles

Quiver for IML-RESI PD200 / PD300

Quiver for IML-RESI PD400

Quiver for IML-RESI PD500

Quiver for IML-RESI PD600

Quiver for IML-RESI PD750

Quiver for IML-RESI PD1000



Item No. 3203017

Item No. 3104017

Item No. 3105020

Item No. 3105017

Item No. 3105018

Item No. 3105019

System Transport Case

Stable system transport case with foam insert and key

Transport Case for IML-RESI PD200 / PD300 / PD400

Transport Case for IML-RESI PD500

Transport Case for IML-RESI PD600

Transport Case for IML-RESI PD750

Transport Case for IML-RESI PD1000



Item No. 3100711

Item No. 3100811

Item No. 3100812

Item No. 3100911

Item No. 3100912

Disposables

IML-RESI PD-Series

Standard Threaded Drilling Needles

With special and improved surface coating
(10 pieces per pack)

IML-RESI PD200	(Ø 3,0 mm tip / length: 422 mm)
IML-RESI PD300	(Ø 3,0 mm tip / length: 422 mm)
IML-RESI PD400	(Ø 3,0 mm tip / length: 521 mm)
IML-RESI PD500	(Ø 3,0 mm tip / length: 688 mm)
IML-RESI PD600	(Ø 3,0 mm tip / length: 795 mm)
IML-RESI PD750	(Ø 3,0 mm tip / length: 947 mm)
IML-RESI PD1000	(Ø 3,0 mm tip / length: 1271 mm)



Item No. 3100322
Item No. 3100323
Item No. 3100324
Item No. 3100325
Item No. 3100326
Item No. 3100327
Item No. 3100328

Threaded Drilling Needles for Pole Inspection

With special and improved surface coating
(10 pieces per pack)

IML-RESI PD200	(Ø 2,8 mm tip / length: 421 mm)
IML-RESI PD300	(Ø 2,8 mm tip / length: 421 mm)
IML-RESI PD400	(Ø 2,8 mm tip / length: 520 mm)
IML-RESI PD500	(Ø 2,8 mm tip / length: 687 mm)
IML-RESI PD600	(Ø 2,8 mm tip / length: 794 mm)
IML-RESI PD750	(Ø 2,8 mm tip / length: 946 mm)
IML-RESI PD1000	(Ø 2,8 mm tip / length: 1270 mm)



Item No. 3100329
Item No. 3100330
Item No. 3100331
Item No. 3100332
Item No. 3100333
Item No. 3100334
Item No. 3100335

Standard Drilling Needles ,Click'

With special and improved surface coating
(10 pieces per pack)

IML-RESI PD200	(Ø 3,0 mm tip / length: 422 mm)
IML-RESI PD300	(Ø 3,0 mm tip / length: 422 mm)
IML-RESI PD400	(Ø 3,0 mm tip / length: 521 mm)
IML-RESI PD500	(Ø 3,0 mm tip / length: 688 mm)
IML-RESI PD600	(Ø 3,0 mm tip / length: 795 mm)
IML-RESI PD750	(Ø 3,0 mm tip / length: 947 mm)
IML-RESI PD1000	(Ø 3,0 mm tip / length: 1271 mm)



Item No. 3100339
Item No. 3100340
Item No. 3100341
Item No. 3100342
Item No. 3100343
Item No. 3100344
Item No. 3100345

Disposables

IML-RESI PD-Series

Drilling Needles for Pole Inspection ,Click'

With special and improved surface coating
(10 pieces per pack)

IML-RESI PD200	(Ø 2,8 mm tip / length: 421 mm)
IML-RESI PD300	(Ø 2,8 mm tip / length: 421 mm)
IML-RESI PD400	(Ø 2,8 mm tip / length: 520 mm)
IML-RESI PD500	(Ø 2,8 mm tip / length: 687 mm)
IML-RESI PD600	(Ø 2,8 mm tip / length: 794 mm)
IML-RESI PD750	(Ø 2,8 mm tip / length: 946 mm)
IML-RESI PD1000	(Ø 2,8 mm tip / length: 1270 mm)



Item No. 3100349

Item No. 3100350

Item No. 3100351

Item No. 3100352

Item No. 3100353

Item No. 3100354

Item No. 3100355

Thermal-Paper Rolls

Thermal-Paper rolls for IML-RESI PD-Series Bluetooth printers
(10 pieces per pack)

Thermal-Paper Rolls



Item No. 3100336

Spare Parts

IML-RESI PD-Series

Exchangeable Telescope

Exchangeable telescope with complete recording of the needle guidance in the event of needle breakage

Exchangeable Telescope PD200 / PD300 / PD400

Exchangeable Telescope PD500

Exchangeable Telescope PD600

Exchangeable Telescope PD750

Exchangeable Telescope PD1000



Item No. 4100016

Item No. 4100021

Item No. 4100031

Item No. 4100022

Item No. 4100023

Exchangeable Drill Chuck ,Threaded'

Exchangeable drill chuck with threaded socket

Exchangeable Drill Chuck for all PD-Series instruments



Item No. 10500-028

Exchangeable Drill Chuck ,Threaded' with Tool

Exchangeable drill chuck ,threaded' with tool

Exchangeable Drill Chuck ,Threaded' with Tool PD200 / PD300

Exchangeable Drill Chuck ,Threaded' with Tool PD400

Exchangeable Drill Chuck ,Threaded' with Tool PD500

Exchangeable Drill Chuck ,Threaded' with Tool PD600

Exchangeable Drill Chuck ,Threaded' with Tool PD750

Exchangeable Drill Chuck ,Threaded' with Tool PD1000



Item No. 10500-027/3

Item No. 10500-027/4

Item No. 10500-027/5

Item No. 10500-027/6

Item No. 10500-027/7

Item No. 10500-027/10

Exchangeable Drill Chuck ,Click'

Exchangeable drill chuck with ,Click' System

Exchangeable Drill Chuck for all PD-Series instruments



Item No. 10500-048

Spare Parts

IML-RESI PD-Series

Exchangeable Drill Chuck ,Click' with Tool

Exchangeable drill chuck ,click' with tool

Exchangeable Drill Chuck ,Click' with Tool PD200 / PD300

Exchangeable Drill Chuck ,Click' with Tool PD400

Exchangeable Drill Chuck ,Click' with Tool PD500

Exchangeable Drill Chuck ,Click' with Tool PD600

Exchangeable Drill Chuck ,Click' with Tool PD750

Exchangeable Drill Chuck ,Click' with Tool PD1000



Item No. 10500-048/3

Item No. 10500-048/4

Item No. 10500-048/5

Item No. 10500-048/6

Item No. 10500-048/7

Item No. 10500-048/10

45° Adapter

Aluminium adapter

45° Adapter



Item No. 3100932

Front Adapter

Complete front adapter made of brass

Front Adapter with measuring sleeve 2,8 mm for standard drilling needles

Front Adapter with measuring sleeve 2,6 mm for pole inspection drilling needles



Item No. 3100930

Item No. 3100931

Disinfection Adapter

Adapter for disinfecting the drilling needle

Disinfection Adapter for standard drilling needles

Disinfection Adapter for pole inspection drilling needles

Felt Wheels 10 pieces



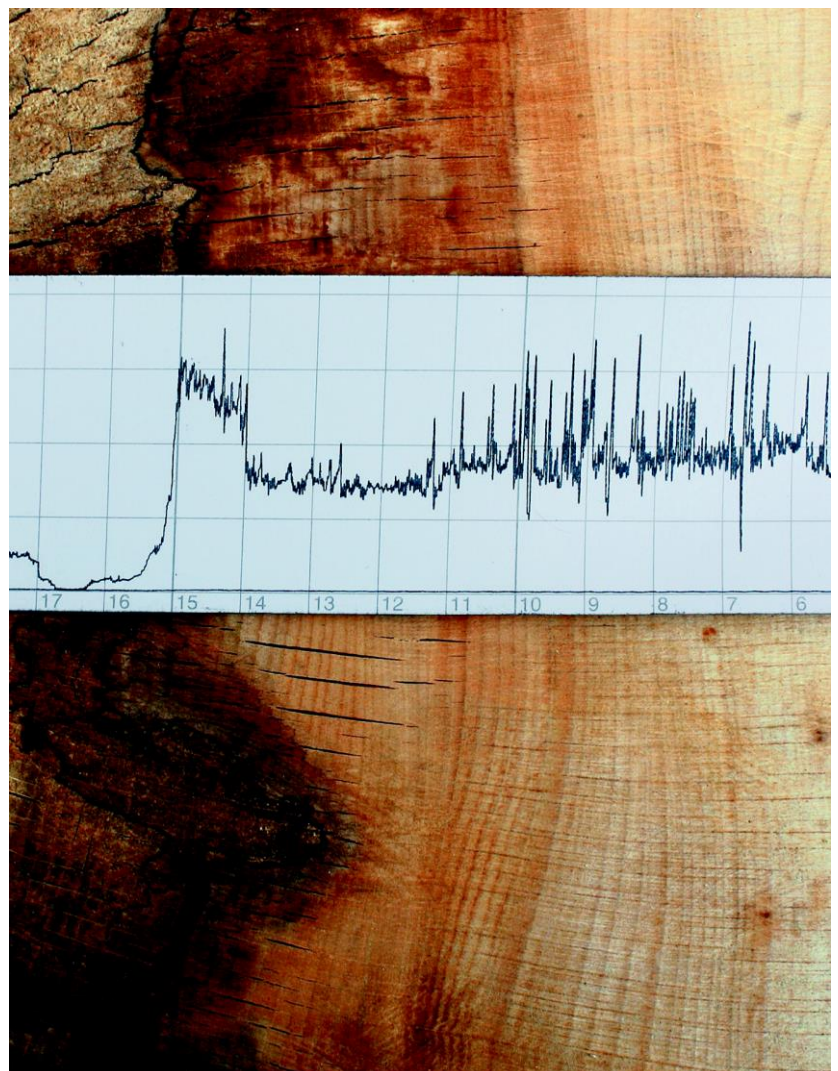
Item No. 4100043

Item No. 4100042

Item No. 4100044

IML-RESI F-Series

Compact and flexible use



IML-RESI F-Series

Compact and flexible use

IML-RESI F-Series

The IML-RESI F-Series can be used anywhere where reliable and meaningful test results are required.

- Cordless drill as a drive unit
- On-site documentation of measurement results
- Recording of the measurement curve on weather-proof wax paper strips
- Add-on innovative Bluetooth electronic unit enables rapid digital acquisition of measurement data
- Low weight ensures efficient operation even in difficult operational areas
- Splash-proof stainless steel housing with plexiglass cover to protect the measurement record
- Measurements below 45° using snap-on adapter

The IML-RESI F-Series is available in two versions for different applications:

- Tree Care and Tree Inspection
- Construction Wood



IML-RESI F300SX



Snap-on 45° Adapter

Further two enhanced versions can be ordered:

- S-Version: Particularly stable design of the needle support for frequent use in hardwoods
- SX-Version: Improved needle guidance using the exchangeable telescope

Scope of delivery (Tree Care and Tree Inspection):

- F-Series measurement device with mounted drilling needle
- Bosch drill GSR 18V Li-Ion Professional with adapter ring
- Fast Charger and 2x 18V Li-Ion 2,6 Ah batteries
- Shoulder strap
- 5x drilling needles and 400x wax paper strips
- Paper cassette
- Tool for maintenance ,Tool Kit'
- Aluminium transport case

Scope of delivery (Construction Wood):

- F-Series measurement device with mounted drilling needle for 45° Adapter
- Bosch drill GSR 18V Li-Ion Professional with adapter ring
- Fast Charger and 2x 18V Li-Ion 2,6 Ah batteries
- Shoulder strap
- 45° Adapter
- 5x drilling needles for 45° Adapter and 400x wax paper strips
- Paper cassette
- Tool for maintenance ,Tool Kit'
- Aluminium transport case
- Instructions Manual

IML-RESI F-Series

Compact and flexible use

IML-RESI F-Series for Tree Care and Tree Inspection

IML-RESI F300 (Tree Care and Tree Inspection)
Drilling depth 300 mm

Item No. 3100800-3S

IML-RESI F400 (Tree Care and Tree Inspection)
Drilling depth 400 mm

Item No. 3100800-4S

IML-RESI F500 (Tree Care and Tree Inspection)
Drilling depth 500 mm

Item No. 3100800-5S

IML-RESI FS-Series for Tree Care and Tree Inspection (reinforced S-Version)

IML-RESI F300S (Tree Care and Tree Inspection)
Drilling depth 280 mm

Item No. 3100810-3S

IML-RESI F400S (Tree Care and Tree Inspection)
Drilling depth 380 mm

Item No. 3100810-4S

IML-RESI F500S (Tree Care and Tree Inspection)
Drilling depth 480 mm

Item No. 3100810-5S

IML-RESI FSX-Series for Tree Care and Tree Inspection (reinforced SX-Version)

IML-RESI F300SX (Tree Care and Tree Inspection)
Drilling depth 280 mm

Item No. 3100810-3SX

IML-RESI F400SX (Tree Care and Tree Inspection)
Drilling depth 380 mm

Item No. 3100810-4SX

IML-RESI F500SX (Tree Care and Tree Inspection)
Drilling depth 480 mm

Item No. 3100810-5SX

IML-RESI F-Series

Compact and flexible use

IML-RESI F-Series for Construction Wood

IML-RESI F150 (Construction Wood)
Drilling depth 150 mm

Item No. 3100150

IML-RESI F300 (Construction Wood)
Drilling depth 300 mm

Item No. 3100900-3S

IML-RESI F400 (Construction Wood)
Drilling depth 400 mm

Item No. 3100900-4S

IML-RESI F500 (Construction Wood)
Drilling depth 500 mm

Item No. 3100900-5S

IML-RESI FS-Series for Construction Wood (reinforced S-Version)

IML-RESI F300S (Construction Wood)
Drilling depth 280 mm

Item No. 3100910-3S

IML-RESI F400S (Construction Wood)
Drilling depth 380 mm

Item No. 3100910-4S

IML-RESI F500S (Construction Wood)
Drilling depth 480 mm

Item No. 3100910-5S

IML-RESI FSX-Series for Construction Wood (reinforced SX-Version)

IML-RESI F300SX (Construction Wood)
Drilling depth 280 mm

Item No. 3100910-3SX

IML-RESI F400SX (Construction Wood)
Drilling depth 380 mm

Item No. 3100910-4SX

IML-RESI F500SX (Construction Wood)
Drilling depth 480 mm

Item No. 3100910-5SX

Bluetooth Electronic Unit

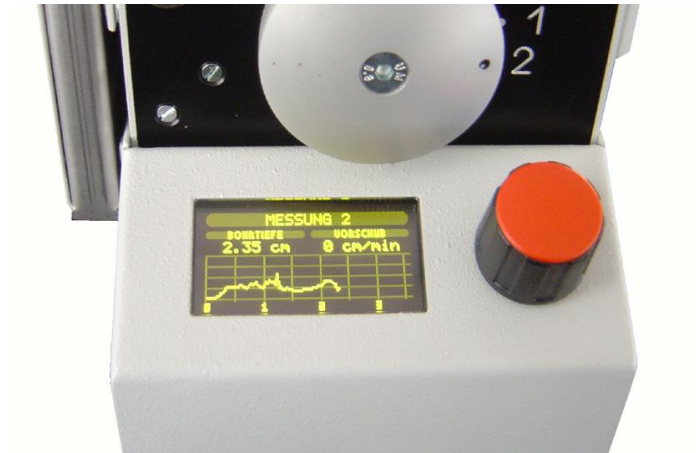
IML-RESI F-Series

Bluetooth Electronic Unit for IML-RESI F Series

Each IML-RESI F Series can be expanded using the Bluetooth Electronic Unit. The Bluetooth Electronic Unit enables rapid digital capture of measurement data

Functions:

- Electronic storage of measurement data to internal memory
- Input of 40-digit ID numbers and remarks
- USB and Bluetooth interface for connection to a PC or handheld device
- Wireless transmission of measurement record
- Simultaneous recording of drilling curve
- Displays the feed rate, remaining memory length, battery state, the drilling stage and the date and time



Bluetooth Electronic Unit

Scope of delivery (standard):

- Bluetooth electronic unit with built-in Li-Ion battery and 20 m recording length of the measured curves
- Charger with USB connector (110V - 240V)
- USB data transfer cable
- Bluetooth USB-Adapter
- IML Software Center F-Tools

Functions: Configuration and readout of electronic, transmission of measurement data via USB or Bluetooth, analysis and storage of data on a PC or handheld device, magnification, scaling, evaluation and printing of measurements

Bluetooth Electronic Unit for IML-RESI F-Series

Bluetooth Electronic Unit

Item No. 4100007

Optional Accessories

Bluetooth Electronic Unit for IML-RESI F-Series

Memory Enlargement for Bluetooth Electronic Unit

Memory Enlargement M40

40 metres recording length of measurements

Item No. 4100008

Memory Enlargement M80

80 metres recording length of measurements

Item No. 4100009

Memory Enlargement M160

160 metres recording length of measurements

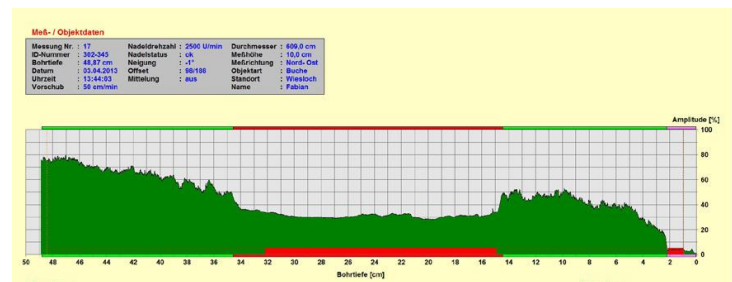
Item No. 4100010

IML Software Center F-Tools PRO

Advanced software with standard F-Tools features plus exporting, averaging, printing of measurements, cavity detector, tree-ring analysis and simultaneous recording and transmission of measurement on a PC or handheld device

IML Software Center F-Tools PRO

Item No. 3100803



Pole Inspector (incl. IML Software Center F-Tools PRO)

Automatic cavity evaluation and analysis of external decay

Pole Inspector

Item No. 3100806

Multi User Licence

Activation of software for another PC or handheld device (for more than three installations)

Multi User Licence

Item No. 3100890

Optional Accessories

IML-RESI F-Series

Bosch Drill

Drive Unit for IML-RESI F-Series

Bosch Drill GSR 18V Li-Ion Professional
incl. charger, 2x Premium Li-Ion 18V 2.6 Ah batteries, adapter ring and instructions



Item No. 31000118

Quiver for Drilling Needles

For safe storage of approximately 50 drilling needles

Quiver for IML-RESI F300 / F300S / F300SX

Quiver for IML-RESI F400 / F400S / F400SX

Quiver for IML-RESI F500 / F500S / F500SX



Item No. 3103016

Item No. 3104016

Item No. 3105016

Transport Case

Transport case made of aluminium with foam insert and key

Transport Case for IML-RESI F150

Transport Case for IML-RESI F300 / F300S / F300SX

Transport Case for IML-RESI F400 / F400S / F400SX

Transport Case for IML-RESI F500 / F500S / F500SX



Item No. 3100611

Item No. 3100311

Item No. 3100411

Item No. 3100511

Transport Case ,PROFI'

Sturdy transport case with foam insert and key

Transport Case ,PROFI' for IML-RESI F300 / F300S / F300SX

Transport Case ,PROFI' for IML-RESI F400 / F400S / F400SX

Transport Case ,PROFI' for IML-RESI F500 / F500S / F500SX



Item No. 3100312

Item No. 3100412

Item No. 3100512

Optional Accessories

IML-RESI F-Series

Premium Batteries

Spare batteries for Bosch Drill GSR 18V Li-Ion Professional

Premium Battery 18V Li-Ion 2,6 Ah

Premium Battery 18V Li-Ion 3,0 Ah



Item No. 30009928

Item No. 30009933

Batteries

Spare batteries for Bosch Drill GSR 12V Professional

Battery 12V 1,5 AhNiCd

Battery 12V 2,0 AhNiCd

Battery 12V 2,4 AhNiCd

Battery 14,4V 2,4 AhNiCd



Item No. 30009925

Item No. 30009924

Item No. 30009926

Item No. 30009927

Batteries

Spare batteries for Bosch Drill GBM 12VES-2

Battery 12V 1,7 AhNiCd

Battery 12V 2,0 AhNiCd

Battery 12V 2,4 AhNiCd

Battery 12V 3,0 AhNiMh



Item No. 30009921

Item No. 30009922

Item No. 30009923

Item No. 30009930

Connection Cable PowerPack

Connection Cable for IML-RESI F-Series PowerPack

Connection Cable PowerPack
for Bosch Drill GBM 12VES-2

Connection Cable PowerPack
for Bosch Drill GSR 12V Professional



Item No. 3100030

Item No. 3100031

Disposables

IML-RESI F-Series

Standard Drilling Needles

With special and improved surface coating
(10 pieces per pack)

IML-RESI F300 / F300S / F300SX (Ø 3,0 mm tip / length: 372 mm)

IML-RESI F400 / F400S / F400SX (Ø 3,0 mm tip / length: 482 mm)

IML-RESI F500 / F500S / F500SX (Ø 3,0 mm tip / length: 592 mm)



Item No. 3100316

Item No. 3100416

Item No. 3100516

Standard Drilling Needles for 45° Adapter

With special and improved surface coating
(10 pieces per pack)

IML-RESI F150 (Ø 3,0 mm tip / length: 237 mm)

IML-RESI F300 / F300S / F300SX (Ø 3,0 mm tip / length: 387 mm)

IML-RESI F400 / F400S / F400SX (Ø 3,0 mm tip / length: 497 mm)

IML-RESI F500 / F500S / F500SX (Ø 3,0 mm tip / length: 607 mm)



Item No. 3100116

Item No. 3100317

Item No. 3100417

Item No. 3100517

Drilling Needles for Pole Inspection for 45° Adapter

With special and improved surface coating
(10 pieces per pack)

IML-RESI F300 / F300S / F300SX (Ø 2,8 mm tip / length: 387 mm)

IML-RESI F400 / F400S / F400SX (Ø 2,8 mm tip / length: 497 mm)

IML-RESI F500 / F500S / F500SX (Ø 2,8 mm tip / length: 607 mm)



Item No. 3100319

Item No. 3100419

Item No. 3100519

Wax Paper Strips (cm)

Wax paper strips with cm-scale (400 pieces per pack)

IML-RESI F150

IML-RESI F300 / F300S / F300SX

IML-RESI F400 / F400S / F400SX

IML-RESI F500 / F500S / F500SX



Item No. 3100115

Item No. 3100315

Item No. 3100415

Item No. 3100515

Disposables

IML-RESI F-Series

Wax Paper Strips (inch)

Wax paper strips with inch-scale (400 pieces per pack)

IML-RESI F150

IML-RESI F300 / F300S / F300SX

IML-RESI F400 / F400S / F400SX

IML-RESI F500 / F500S / F500SX



Item No. 3100118

Item No. 3100318

Item No. 3100418

Item No. 3100518

Spare Parts

IML-RESI F-Series

45° Adapter

Snap-on adapter allows measurements below 45° to the ground level

45° Adapter

incl. sleeve, extension of needle guidance and assembly instructions



Item No. 3100015

Shoulder Strap

Shoulder strap with two eyelets

Shoulder Strap



Item No. 30009907

„Tool Kit“

Tool kit for minor maintenance and repair operations

Incl. 1 screwdriver 4 mm, 1 component pliers, pin punch, 1 hexagon pin spanner with t-handle 2,0 and 2,5 mm, 1 hexagon wrench 1,5 mm, hook spanner, 1 pair Nord-Lock discs, 2 clutch discs, 1 clutch bushing, 1 clutch nut, 3x Faceplates 0,5, disassembly magnet, 6 casing screws, 5 safety pins and 1 oil can



Tool Kit

Item No. 3100010

Safety Pins

Safety Pins for overload protection (10 pieces per pack)

Safety Pins



Item No. 3800-059

Spare Parts

IML-RESI F-Series

Clutch Cover

Covering of Clutch

Clutch Cover



Item No. 3800-065

Exchangeable Telescope

Exchangeable telescope with complete recording of the needle guidance in the event of needle breakage

Exchangeable Telescope F300SX / F400SX

Exchangeable Telescope F500SX



Item No. 4100016F

Item No. 4100017F

Spare Parts

Electronic Unit IML-RESI F-Series

USB Connection Cable

USB Connection Cable for serial Electronic Unit of the IML-RESI F-Series

USB Connection Cable
USB Port RS232 Com-Port (9-pin)



Item No. 31000302

Serial Data Transfer Cable

Data Transfer Cable for serial Electronic Unit of the IML-RESI F-Series

Serial Data Transfer Cable
RS232 Com-Port (9-pin) to RS232 Com-Port (15-pin)



Item No. 31000301

Charger with USB Connector (110V - 240V)

Charger for Bluetooth Electronic Unit of the IML-RESI F-Series

Charger with USB Connector



Item No. 4100011

Bluetooth USB Adapter with USB Cable

USB adapter for wireless Bluetooth connection and USB connection cable (length: 185 cm) for Bluetooth Electronic Unit of the IML-RESI F-Series

Bluetooth USB Adapter with USB Cable



Item No. 4100012

Bluetooth USB-Adapter

USB Adapter for the wireless Bluetooth connection (individual) for Bluetooth Electronic Unit of the IML-RESI F-Series

Bluetooth USB-Adapter



Item No. 4100013

IML-RESI E-Series Disposables

IML-RESI E-Series

Standard Drilling Needles

With special and improved surface coating
(10 pieces per pack)

IML-RESI E300 (Ø 3,0 mm tip / length: 467 mm)

IML-RESI E400 (Ø 3,0 mm tip / length: 549 mm)

IML-RESI E500 (Ø 3,0 mm tip / length: 645 mm)



Item No. 30003900

Item No. 30004900

Item No. 30005900

Standard Drilling Needles for 45° Adapter

With special and improved surface coating
(10 pieces per pack)

IML-RESI E300 (Ø 3,0 mm tip / length: 489 mm)

IML-RESI E400 (Ø 3,0 mm tip / length: 571 mm)

IML-RESI E500 (Ø 3,0 mm tip / length: 676 mm)



Item No. 30003905

Item No. 30004905

Item No. 30005905

Paper Rolls

Paper Rolls for IML-RESI E-Series (10 pieces per pack)

Paper Rolls



Item No. 30009900

Standard Ink Ribbon

Ink Ribbon for IML-RESI E-Series (1 piece)

Ink Ribbon

Item No. 30009905

Battery

Spare batteries for IML-RESI E-Series

Battery 7,2V 1,7 AhNiCd

Battery 7,2V 2,0 AhNiCd

Battery 7,2V 3,0 AhNiMh



Item No. 30009909

Item No. 30009920

Item No. 30009929

IML-RESI M-Series Disposables

IML-RESI M-Series

Standard Drilling Needles

With special and improved surface coating
(10 pieces per pack)

IML-RESI M300 (Ø 3,0 mm tip / length: 393 mm)

IML-RESI M500 (Ø 3,0 mm tip / length: 655 mm)



Item No. 3000316

Item No. 3000516

Standard Drilling Needles for 45° Adapter

With special and improved surface coating
(10 pieces per pack)

IML-RESI M300 (Ø 3,0 mm tip / length: 415 mm)



Item No. 3000319

Wax Paper Strips

Wax paper strips with cm/inch-scale
(400 pieces per pack)

IML-RESI M300 (cm-scale)

IML-RESI M500 (cm-scale)

IML-RESI M300 (inch-scale)

IML-RESI M500 (inch-scale)



Item No. 3000315

Item No. 3000515

Item No. 3000325

Item No. 3000525

Batteries

Spare batteries for IML-RESI M-Series

Battery 7,2V 1,7 AhNiCd

Battery 7,2V 2,0 AhNiCd

Battery 7,2V 3,0 AhNiMh



Item No. 30009909

Item No. 30009920

Item No. 30009929

IML-RESI B-Series Disposables

IML-RESI B-Series

Standard Drilling Needles

With special and improved surface coating
(10 pieces per pack)

IML-RESI B300 (Ø 3,0 mm tip / length: 429 mm)

IML-RESI B400 (Ø 3,0 mm tip / length: 549 mm)

IML-RESI B1000 (Ø 3,0 mm tip / length: 1280 mm)



Item No. 3051280

Item No. 3051410

Item No. 3051950

Standard Drilling Needles for 45° Adapter

With special and improved surface coating
(10 pieces per pack)

IML-RESI B300 (Ø 3,0 mm tip / length: 455 mm, rotatable)

IML-RESI B400 (Ø 3,0 mm tip / length: 574 mm, rotatable)



Item No. 3091280

Item No. 3081410

Thermal-Paper Rolls

Thermal-Paper Rolls for IML-RESI B-Series (10 pieces per pack)

Thermal-Paper Rolls



Item No. 3000450

Chargers for IML-RESI Systems

IML-RESI MD300, PD-Series, F-Series, M-Series, E-Series

Fast Charger for Premium Batteries with Li-Ion Technology 110V - 220V

Only for premium 18V batteries with Li-Ion technology in the MD, F and PD series

Fast Charger 220V for 18V Li-Ion Premium Batteries



Item No. 30009932

Fast Charger 110V with US Plug for 18V Li-Ion Premium Batteries

Item No. 30009934

Standard Charger 220V

For all batteries in the MD, F, M and E series, except premium batteries with Li-Ion technology. For batteries with a voltage of 7,2V - 14,4V



Standard Charger 220V

Item No. 30009904

Fast Charger 220V

For all batteries in the MD, F, M and E series, except premium batteries with Li-Ion technology. For batteries with a voltage of 7,2V - 14,4V



Fast Charger 220V

Item No. 30009911

Car Charger 12V - 24V

For all batteries in the MD, F, M and E series, except premium batteries with Li-Ion technology. For batteries with a voltage of 7,2V - 14,4V



Car Charger 12V - 24V with Cigarette Lighter Connector

Item No. 30009913

Standard Charger 110V with US-Plug

For all batteries in the MD, F, M and E series, except premium batteries with Li-Ion technology. For batteries with a voltage of 4,8V - 12V



Standard Charger 110V with US-Plug

Item No. 30009916

Discharger E45

For all batteries in the MD, F, M and E series, except premium batteries with Li-Ion technology. For batteries with a voltage of 7,2V - 14,4V



Discharger E45

Item No. 30009950

Testing Unit KTT 1250

For all batteries in the MD, F, M and E series, except premium batteries with Li-Ion technology. For batteries with a voltage of 7,2V - 12V



Testing Unit KTT1250

Item No. 30009951

All information contained in this catalogue has been prepared with the utmost care. However, errors cannot be excluded.

WALESCH Electronic GmbH assumes neither legal responsibility nor any liability for the consequences of such errors or mistakes. The information contained herein may be modified without notice.

No liability is accepted for printing or typographical errors. This catalogue is valid until the publication of a new catalogue, subject to corrections due to any technical improvements. This catalogue supersedes all previously valid price lists.

WALESCH Electronic GmbH is distributor of IML-Instrumenta Mechanik Labor System GmbH, Wiesloch Germany

All pictures and products are © 2014 IML-Instrumenta Mechanik Labor System GmbH, Wiesloch Germany. All rights reserved. Dated 01/2014.

WALESCH Electronic GmbH
Gestenrietstrasse 2
8307 Effretikon

Tel: 052 343 80 80
Fax: 052 343 15 00

www.walesch.ch
info@walesch.ch

W A L E S C H
E L E C T R O N I C 
WALESCH Electronic GmbH