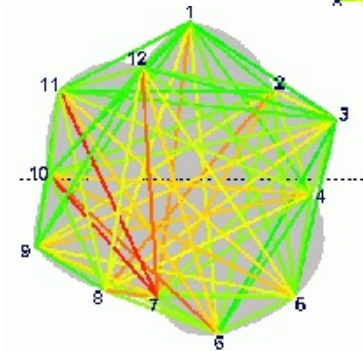
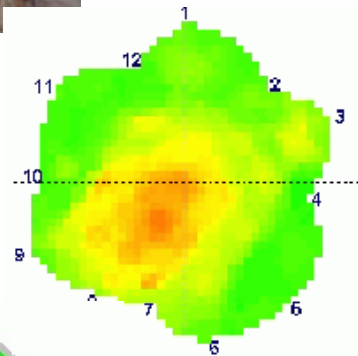


ARBOTOM

Tree Tomography



WALESCH Electronic GmbH
Gestenrietstrasse 2
CH-8307 Effretikon, Switzerland
Phone +41 52 343 80 80
Mail: info@walesch.ch
Web: www.walesch.ch

ARBOTOM

Tree Tomography

Internal decay of trees, hollow spaces and cracks, and their extent can be assessed by the ARBOTOM®. The ARBOTOM® is a new impulse-tomograph, which makes the internal state of a tree or log visible by impulse measurements.

Features

Main Features



- Comfortable control by a Tablet-PC or Notebook
- 2- or even 3-dimensional assessment and display of the internal condition of trees and logs (diameter almost unlimited).
- Revealing weakest areas of trees /samples, revealing points of thinnest residual intact wall - with the help of an (almost) unlimited number of sensors (typical: 4-24).

Results



- Colored tomographs, easy to read
- Localization of wood defects and determination of their extend.
- Immediate evaluation of trees in the field

Applications



- Assessment of tree safety (breakage- /up-rooting)
- Assessment of wood quality of trees and logs

Advantages



- Precise localisation of wood defects
- Results easy to understand
- Evaluation of tree safety becomes more powerful
- Non-destructive

Links/Downloads



This Document as Web Document

Link: http://www.walesch.ch/index.php?segment=dendro&product=rinntech_arbotom

Contact

Address

WALESCH Electronic GmbH
Gestenrietstrasse 2
CH 8307 Effretikon
+41 52 343 80 80
info@walesch.ch